



The Epistle



From the Desk of Pastor Mews

The Lord has blessed our church with an associate Pastor, Rev. Ray Holman. He and his wife, Melissa, and two children, Andrew and Hannah, will be arriving on May 31, and he will be installed on June 18. You can find more information on that in this Epistle.

Upon calling Rev. Holman, we reached an agreement with our sister church in Defiance, Christ Our Savior (COS) to share pastoral ministry with them. We have and will continue to share details and be as transparent as possible with you as we begin this joint ministry together. As God works in His time, "The Lutheran Witness," a magazine publication of the LCMS, recently had a timely and wonderful article in the May 2023 magazine that captures our purpose and joint ministry goal with COS. We received permission from that magazine to share the article "Multi-Congregation Parishes: Lively Word and Sacrament Ministry" with you, and it is a must read. In other words, do not, *not* read this. You, SJL and COS will be blessed by your familiarity with the thoughts and essence of this article. To me, it reinforces that God is the faithful shepherd of His Church and will provide and lead His church to continue to faithfully minister with the resources He has provided. Read it, let me and other leaders know what you think, and feel free to share it with a friend.

Blessings, Pastor Kurt F. Mews, (KFM).



(Read the article on page 3)

Contents:

- 1- Desk of Pastor Mews
- 2- June Sermons and Holidays
- 3-Lutheran Witness Article
- 7-Installation Invitation
- 8-Desk of Pastor Holman
- 9-Desk of Principal John March
- 10-Pastor Mew's Official Acts
- 11-Summer Events
- 12-Food Pantry/Ladies Aid/
Clothes Closet
- 13-2023 Confirmands
- 14-Youth Scoop
- 15-Mac Powel Concert/Prayer
Requests
- 16-Pierstorf College Fund/May
Drive Thru Dinner Results
- 17-A Note From the Church
Office Committee
- 18-Bible Study Opportunities
- 19-Anniversaries/ Sermons
- 20-80+ Birthdays
- 21-Scout News
- 22-Outreach Ministry
- 23- Ark Encounter Day Trip
- 24-June Calendar
- 25-July Calendar

4th OF July

Church office will be
c l o s e d

JUNE SERMONS

JUNE 3-4
"WATER IS LIFE"
GENESIS 1:1-2:4
PASTOR MEWS

JUNE 10-11
GUEST PREACHER

JUNE 17-18
"SKETCHES OF REALITY"
ROMANS 5:6-15
PASTOR MEWS

JUNE 24-25
"BE AFRAID OR FEAR NOT?"
MATTHEW 10:26-33
PASTOR HOLMAN

CONTACT INFORMATION:

CHURCH OFFICE OPEN
Monday-Friday, 8:00 to 4:00 p.m.

Church Office: 419.782.5766
Pastor Mews: ext 105
pastor.mews@stjohntigers.com
419.670.5014
(after hours contact number)

Church Office:
church.office@stjohntigers.com

From *The Lutheran Witness*:

Multi-Congregation **PARISHES** *Lively Word and Sacrament ministry*

by Stacey Egger

ACROSS THE COUNTRY, LCMS congregations are facing declining and aging membership, a shortage of pastors and financial strain. As of 2016, the median age of our adult members was 56, with 30% of our membership older than 65, and 58% older than 50.¹ Further, 57% of our pastors are over the age of 55 (and only 23% are under the age of 45).² Rural, small-town and metropolitan congregations all feel this strain. And yet, amid the struggle, none of the congregations in the LCMS is alone.

The history of the church includes many eras in which congregations outnumbered pastors. In the time of the apostles, pastors traveled miles to multiple congregations. The history of the LCMS — both national and international — contains many similar stories. Now congregations are embracing such models again.

These partnerships, if approached rightly, serve not as a tourniquet on a wound but as a positive blessing to the church.

Of the 5,876 member congregations and new church starts of the Synod, 1,094 (or 18.6%) are already part of a multi-congregation parish (MCP).³ There are 519 MCPs, made up of two, three or four congregations. They are in every district, and 22 districts have at least 10. And there will be more.

Statistically, such partnerships are succeeding in their purpose. An MCP congregation is significantly less likely to be vacant than a single congregation of the same size.⁴

District presidents, pastors of MCPs and other leaders from across the LCMS believe that MCPs are succeeding in many other ways as well. Over and over again, they point out: These partnerships, if approached rightly, serve not as a tourniquet on a wound but as a positive blessing to the church. They can help congregations thrive in their work, refocus on what it means to be the church and remain in place with a lively presence of Word and Sacrament ministry.

When to start looking at partnership

“God makes us all partners by the Gospel,” said the Rev. Dan Galchutt, assistant to the LCMS Kansas District president for missions and stewardship.⁵ “We want to encourage all of our congregations to think about partnerships as early as possible — not just out of necessity.”

Every congregation, said Galchutt, should consider partnering with others to steward resources well and work together as the church. Joint church

¹ Pew Research, “Which U.S. religious groups are oldest and youngest?” pewresearch.org.

² LCMS Rosters and Statistics, “Analysis of Ordained Ministers: Age, Status, Calls, Retention and Placement,” September 2022.

³ MCPs are often referred to as “dual parishes,” but the official term “multi-congregation parishes” is used in this article, as some include three or four congregations.

⁴ LCMS Rosters and Statistics, “LCMS Multi-Congregation Parishes,” Feb. 28, 2023.

⁵ Galchutt now serves as executive director of the LCMS Office of National Mission.

events or youth groups, a joint secretary or other staff member — such things can bless both congregations and lay the groundwork for further partnership in the future.

Usually, MCPs form when one or more of the congregations is unable to support a full-time pastor. District leadership can help congregations sort through factors such as costs versus income, visitor numbers and new member numbers. Often, the restructuring happens when a pastor takes a call or retires.

Certainly, congregations do not need to wait for such a moment to form an MCP. The guiding question should be: Would our congregation carry out its ministry better in partnership with another?

Types of partnership

The LCMS Kansas District has created resources that lay out models for some of the common types of congregational partnerships (available at kslcms.org/partnerships). These models include:

- **Dual parish:** Two (or more) congregations of a similar size partner in ministry.
- **Helping hand:** A larger congregation assists a smaller one.
- **Circuit rider:** A pastor serves several small churches.
- **Multi-site:** Congregations form one entity with multiple ministry sites.

The appropriate model for a congregation may depend more on location and context than on preference. What congregations are around you? What size are they? Are there any that you would work well with?

Here are a few examples:

In Montana, the Rev. John Vallie serves a tri-parish that is a 300-mile round trip. Faith Lutheran in Glasgow, Trinity in Wolf Point and Trinity in Plentywood each have about 15–20 worshippers on a Sunday. Vallie preaches and celebrates the Lord's Supper at a different congregation each week and livestreams the sermon to the others.

In Iowa, the Rev. Jonathan Conner serves Zion in Manning. Zion, while not a part of a formal dual parish, is in “partnership” with Trinity in Manilla. When Trinity had trouble filling a vacancy, Zion provided financial assistance,

allowing Trinity to call her own pastor. In exchange, Zion receives support from Trinity's pastor and partnership with Trinity. Services, events and programs are held jointly or at non-overlapping time.

In Connecticut, the Rev. Evan Scamman accepted a call five years ago to a dual parish in Greenwich, located two miles apart. After three slow, careful years of discussion, St. Paul Lutheran sold its beloved building and joined First Lutheran.

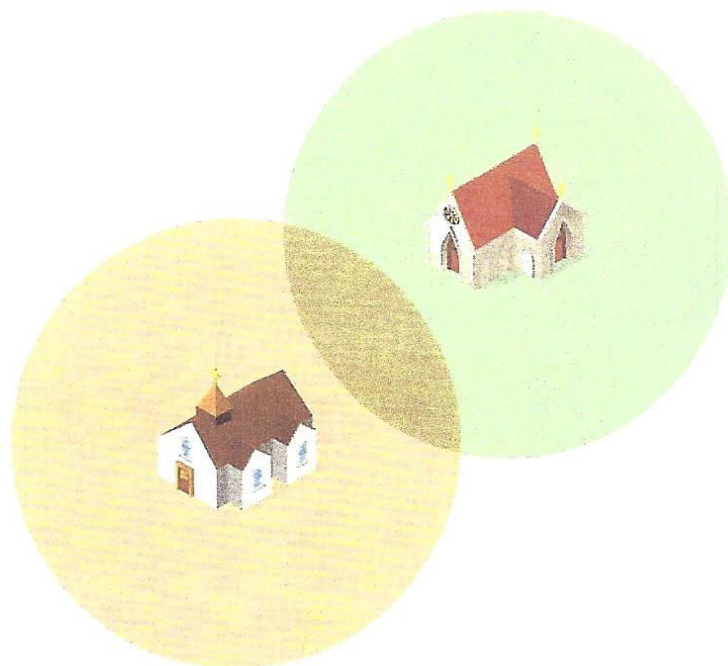
In northern Minnesota, the Rev. Karl Weber serves St. John's Lutheran in Ottertail and St. Paul in Richville. They are 11 miles apart and St. John's (about 100 on Sunday) pays the majority of the expenses, while St. Paul (about 25 on Sunday) pays a smaller portion.

Successful partnerships

While MCPs vary greatly, what makes them successful boils down to three central points:

1. *Keep the mission at the center.*

As congregations face declining numbers, sometimes lapsing into “survival mode” feels inevitable. For instance, 57% of Montana congregations have fewer than 50 in attendance, according to the Rev. Terry Forke, president of the LCMS Montana District. “It's easy to slip into survival mode — just keep the doors open until I get buried.”



- But partnerships forged on economic fear are not set up for success or survival.

"The healthy attitude is: We get to cover a lot of ground and maintain the proclamation of the Gospel in varied places and as congregations we want to do that together," said Forke.

From the beginning, congregations involved in partnership should pray and study the Word of God together. "You will find lots in there about God's people working together," said Galchutt.

2. Set clear expectations ahead of time.

MCPs should create a detailed and unified plan in advance, usually in the form of a Multi-Point Parish Agreement. A sample agreement is provided in the LCMS Council of Presidents Manual, which includes:⁶

- | pastoral duties and expectations;
- | congregational expenses;
- | service times; and
- | the structure and organization of the MCP.

"Pastors can come and go," said the Rev. Dwayne Lueck, president of the LCMS North Wisconsin District, so it is important to make sure congregational leaders are on board with everything.

3. Communicate clearly.

Partnerships thrive when everything is out in the open.

It is crucial that "there are no hidden agendas," said the Rev. John Pingel, president of the LCMS Eastern District. "All of the issues should be out on the table. ... We must deal honestly with each other."

The best way of doing this is to foster personal relationships between the congregations, especially their leaders. Regular meetings of congregational leadership are important, and regular fellowship events for the congregations are very helpful.

Communication from the pastor is also crucial. For instance, he can hold regular "office hours" at each congregation and advertise these times in the church bulletin.

Obstacles to partnership

Just as partnerships succeed in similar ways, the same obstacles seem to arise everywhere. Here are a few that came up again and again:

1. Congregational identity

Many of these congregations have decades, if not centuries, of history. For some members, this history intertwines with generations of family history.

Sharing a pastor with another congregation can feel like a threat to this identity, especially if it means compromising on some of those traditions. Further, entering a partnership often requires replacing a past identity that members may be holding onto.

"Almost every member of either congregation remembers a time when there was standing room only on Easter Sunday, and when there were 30 people in the children's Bible class," said Scamman. "People have to grieve what was lost."

2. Service times

Scheduling service times usually requires sacrifice by at least one congregation. Sometimes it means a service at a time other than Sunday morning.

"Everyone seems to want the Divine Service at 'the divine time of 9 a.m.," said the Rev. Justin Panzer, president of the LCMS Kansas District. "How do we be flexible for the sake of the kingdom of God?"

When it comes to these practical details, it is difficult for congregations to sacrifice their routine practices.

3. Pastor's time, residence and attention

When a pastor shepherds two or three or four congregations, tensions can arise over his work and his whereabouts. How often is he in our church office? If he lives in another town, do those members have more access to him? Are we getting what we're paying for?

This can be especially difficult in partnerships where a larger congregation pays a larger portion of the pastor's salary.

Congregations may also struggle with the loss of many services that their pastor once provided. A congregation unprepared to assume more of these tasks will likely feel a loss or overburden their pastor.

4. Prior community tensions

One district president shared a story of a congregation that was resisting partnership for months. He couldn't understand it. Finally, an elder clued him in: "We can't partner with them, they've been our rivals in football for years."

Sports rivalries in rural and small-town settings — and all manner of other cultural rivalries in all settings — can pose real obstacles to partnership.

"Almost every member of either congregation remembers a time when there was standing room only on Easter Sunday, and when there were 30 people in the children's Bible class. People have to grieve what was lost."

⁶ This is available online as a part of the LCMS Kansas District's partnership resources.

Facing the obstacles, refocusing on the mission

These obstacles, difficult as they are, can in fact bless the church as congregations work through them.

The formation of multi-congregation parishes gives congregations the opportunity to refocus on what the church is, what the pastor is for, and how they should work together as brothers and sisters in Christ and members of a Synod.

"We build our identity around so many things that are ultimately not Jesus," said Conner. "If we can refocus on our mission and the ministry that God is doing in our buildings and out from us, we'll find more we agree upon than we don't."

For example, multiple service times can have advantages, when they are not on Sunday. While not ideal, in an increasingly secularized world many end up with Sunday morning obligations. A Saturday night service can be a great blessing.

When the pastor's time is constrained, both he and the congregation must focus on what he is really there for — and these things become valued as the primary things they are. The members, in turn, step up to fill other roles.

"These congregations become a lot more self-sufficient," said the Rev. Brady Finnern, president of the LCMS Minnesota North District. "They are expecting their pastor to be their pastor, primarily."

The pastor must "show up, preach, lead study, preside over the Sacraments," said the Rev. Michael Lange, president of the LCMS California-Nevada-Hawaii District. Other responsibilities can be taken up by the congregation: visiting and caring for members, leading home studies, secretarial work, proclaiming Christ to their neighbors and performing acts of mercy.

Partnerships also require congregations to look outside of their isolated existence and to consider what the church is.

Manning and Manilla, Iowa, are small towns that were "arch-rivals" for years, said Conner. "To watch these two churches in these two towns partner together has been amazing. They have risen above the historic conflict to celebrate what God is doing in these two locations."

"It's really how circuits and the Synod are meant to work anyway," said the Rev. Todd Kollbaum, director of LCMS Rural and Small Town Mission.

"We need each other, whether we are in partnership or just neighbors," said the Rev. Sean Daenzer, who is the director of LCMS Worship and previously served a dual parish in the North Dakota District. A dual parish can be "the first step in broadening our horizons to see that there are Christians all around the world and that we are truly united," he said.

We need each other. MCP congregations understand this inherently.

The Rev. Mark Wiegert serves a tri-parish in Lewistown, Stanford and Denton, Mont. One year, when the Denton congregation sustained significant hail damage, the other two congregations covered an extra share of expenses. Another year, Denton ended up with a surplus and shared it with the Stanford congregation, which was struggling that year. "We do bear one another's burdens, no doubt," said Wiegert.

A blessed end

Keeping a struggling church open is not always the best option. However, there are many, many situations in which it is.

In Kansas, said Panzer, as in many places, often the closure of a congregation means the loss of an LCMS presence in an entire county. In Montana, it can mean "hundreds of miles without anyone proclaiming the Gospel," said Forke. And maintaining a place where the Gospel is being proclaimed is full of promise.

"Just because a congregation enters a dual parish, doesn't mean it's permanent," said Panzer. "The unchurched are everywhere. ... The harvest is ripe."

There are, of course, times when closure is inevitable. When lay leaders are tired and no one new is stepping up, a congregation can't pay its utility bills, or a building is decrepit beyond the point of affordable repairs, a partnership may not be the way forward.

But even such difficult cases can witness to the reality of Christ's church, as these congregations learn that they have not "failed."

"Where is that first church in Jerusalem that the apostles started?" said Scamman. "It's gone. The building is gone, the people are gone. And yet the church is thriving — the Church Triumphant only grows. If we can remember the 200 people that used to be here and now they're all with Christ, that's mission accomplished. That's the church's job on earth: that the last member be ushered into the kingdom of God, and our Lord returns. Then we close shop, lock the doors. We don't need these buildings on earth anymore." ☺

STACEY EGGER serves as a staff writer and editor for LCMS Communications.



THE PASTORAL INSTALLATION CELEBRATION OF

REVEREND
RAYMOND HOLMAN



You are cordially invited to the
installation of the Rev. Raymond
Holman on Sunday June 18, 2023
at 4:00 p.m.

A meal will follow the service.

Please RSVP at
<https://forms.gle/7Fmt8N7ZKia8ua699>
by June 5.



From the Desk of Pastor Holman



Greetings in the name of our Lord Jesus Christ:

One of my favorite verses in the Bible comes from the end of the book of Micah. There the prophet pens the following words, “Who is a God like you, pardoning iniquity and passing over transgression for the remnant of his inheritance? He does not retain his anger forever, because he delights in steadfast love” (Micah 7:18).

Throughout the world there are many gods. Whether it is Allah of Islam, the many gods of Hinduism who are in a constant struggle between good and evil, or the gods of atheism who teach “self love” and “self forgiveness,” each is fickle. Each constantly changes. Each produces nothing other than inner-instability.

There are, of course, other gods in the world today as well, the so-called “gods” of money, cell phones, political parties, social media, sports and the like. Each may offer momentary happiness, but never lasting forgiveness or the firm hope of a promise never to be broken.

This brings me back to the question the prophet Micah asked: Who is a god like our Triune God? There is none! This is what makes what happens here at St. John Lutheran so unique. Each time we encounter the Lord, we are regularly reminded of his steadfast love and forgiveness. In worship we declare “With you, O Lord, there is forgiveness, therefore you are feared,” we hear the Pastor declare on behalf of Christ, “I forgive you your sins,” and we partake of Jesus’ body and blood “for the forgiveness of your sins.” More than this, throughout our Scriptures we are reminded of God’s steadfast love—from the first moment of creation all the way to the promise of the new creation in Revelation.

I invite you to come and worship our unique God. Here you will find something that nothing else in the world can give: God’s relentless love and forgiveness, and a peace that comes only from God’s unfailing love for us in Jesus Christ, which the world cannot give.

-Rev. Raymond Holman

A large, stylized handwritten signature in black ink, starting with a heart shape and ending in a long, sweeping line.

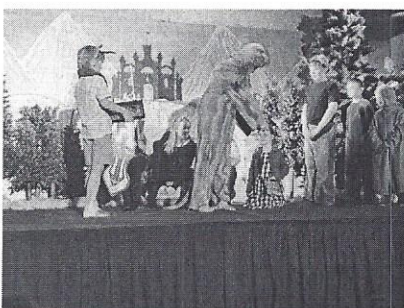
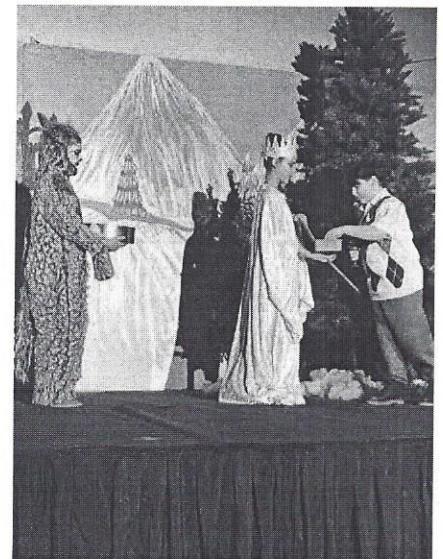
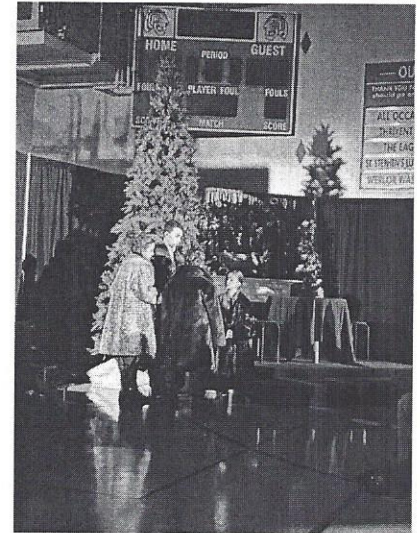
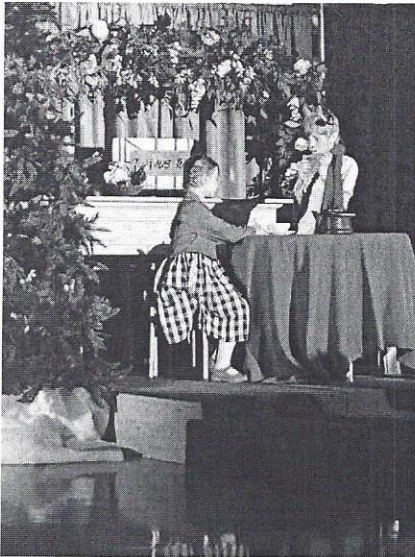
From the Desk of Principal John March

St. John Lutheran School's Production of The Lion, The Witch and The Wardrobe

April 21 and 22

Directed by, Lorrie March

Blessings, Mr. John March, principal





Pastor Mews' Official Acts and Congregation Events

OFFICIAL ACTS:

- 2023 Jr. Confirmation of: Addison B, Ike W, Ruth G, Kalyn H and Koby B took place on May 7, 2023 at the 11:00 a.m. service.
- Koby B.'s baptism, 4/30 at 11:00 a.m.
- Funeral of Kenn Sawmiller, 4/27, who passed away on 4/20.
- Funeral of Virginia Mast on 4/28, at Schaffer south, who passed away on 4/20.
- Funeral of JoAnn McCray on 5/1, who passed away on 4/27.
- Celebration of Life for Ron Meyer, husband of Sharon Meyer on 5/13, 11:00 a.m., who passed away on 4/17.
- Alonzo Lucas' Baptism at 9:30 a.m. on 6/4.
- Memorial Service for Wilma Beaverson will be held on 9/23, at 11:00 a.m. at SJL Church.

PERSONAL:

Pastor Mews will be on vacation from 6/9-6/16 in Illinois.

PRIVATE COMMUNION

The Pastor continues to offer private Communion for anyone who wishes to have Communion. Please call the church office for an appointment.

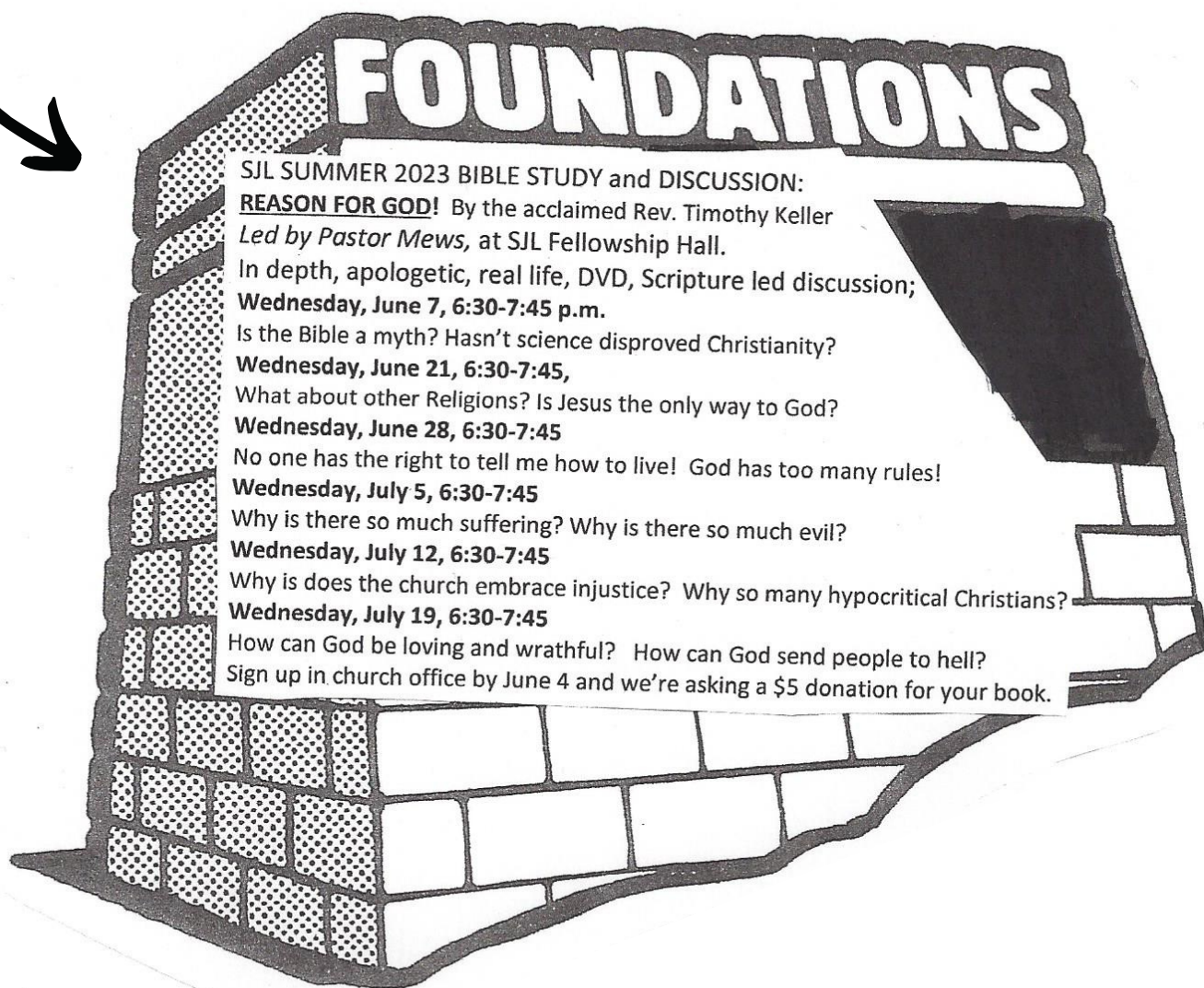
SHUT-IN CALLS

We have around 30 people who are designated as shut-ins in our congregation. The Pastor, Walt & Lorna Smith, and George & Phyllis Kaiser are keeping in contact with our members. If the shut-in person is comfortable having a home visit, arrangements will be made for this visit.

VBS

VBS takes place on July 23-26 at Christ Our Savior Lutheran Church from 5:30-8:00pm with a family meal each day at 5:30. You can sign up your kids or to volunteer at <http://vbspro.events/p/events/sjl23>

SUMMER EVENTS





MAY FOOD PANTRY REPORT

As of May 25 we served 74 families or 205 people. A total of 298 bags a value of \$2,980.00.

In the month of May we participated in the "Stamp Out Hunger" sponsored by the United Way and the United States Post Office. We received two full pick-up loads of food. Thank you to all the volunteers who helped sort the food. Also, Johns Manville had a food drive and was shared between other food pantries in Defiance. We serve Defiance County residents once a month with a three-day food supply. To keep our variety of items on the shelves we shop at Meijer throughout the month to replenish the food supply.

Our next run to Toledo Food Bank and Toledo Seagate will be on Wednesday, June 14.

Thank you to everyone who continues to support this ministry, it is much appreciated.

Rita Bergman
Food Pantry Manager

**The Church Office will be
Closed
July 4, 2023**



Ladies Aid

Psalm 113:3 "From the rising of the sun to the place where it sets, the name of the Lord is to be praised." Remember that there will be no meetings in June or July. You may still bring in Laundry Soap and Toilet Paper for the Food pantry. I hope that everyone is enjoying their late spring and early summer.

See you on August 31 for our next meeting. Please bring some fund raising ideas to the meeting.

Roberta Philipot
President



THE CLOTHES CLOSET,

located across the street from the school, continues to provide gently used clothing at an affordable price to our community. The Clothes Closet is open on Thursday from 9:00 a.m. to 4:00 p.m. and on Friday from 10:00 a.m. until 2:00 p.m. If you have a donation, you may drop it off on Monday or Tuesday from 8:00 to 10:00 a.m. or during days we are open. Bring donations and come on in and do a little shopping.



419-782-5766

655 WAYNE AVE DEFIANCE, OH

WWW.STJOHNDEFIANCE.COM

WWW.FACEBOOK.COM/STJOHNLUTHERANDEFIANCE

2023 Confirmands



We praise God
for our five
young
confirmands
who confirmed
their faith in
Jesus on
May 7, 2023.



Back: Pastor Mews
Middle: Kalyn H., Ruthie G., Addi B.
Front: Koby B., Ike W.

SJL YOUTH SCOOP JUNE/JULY 2023

YOUTH.SJL@STJOHNTIGERS.COM

Vision Statement: To equip today's youth to become leaders of the faith leading/living Godly lives & sharing Christ's love in the world through fellowship, Bible study, & service.

Mission Statement: Let your light shine as you walk like Christ: Knowing, Sharing, & Growing in His Love

Annual Mother's Day Flower Sale!

Thanks to those who bought flowers. Happy Gardening!

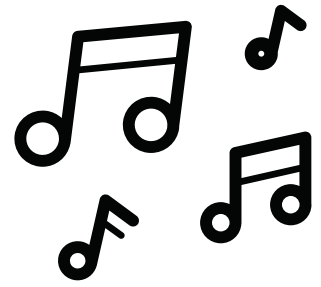


Mark your calendars now:

- June 11th @ 6:30-8 PM: Pizza & a Movie > Family Camp
- Saturday, July 22nd: Camp Clay (<https://www.vwymca.org/camp-clay>)
 - Depart St. John Lutheran at noon and leave Van Wert at 5 PM.
 - Cost is \$7 per person
 - Eat lunch before you come.
 - We'll stop for fast food on the way home
 - Bring swimsuit, towel, tennis shoes, life preserver, sunscreen, etc...
 - Rain Date Sunday, July 23rd
 - Students exiting fifth grade and entering 6th grade for the 2023-2024 school year are invited to join
- August: Defiance County Fair (Aug. 19-26) & the Pie Pan
-More details coming soon!



FYI: MAC POWELL CONCERT
06/03/2023, 7:30 PM - 8:30 PM
Fountain City Amphitheater
526 Avenue B.
Bryan, OH 43506



FREE Mac Powell concert on June 3rd at 7:30pm at the Fountain City Amphitheater in Bryan, Ohio. Mac Powell is a founding member of Third Day, 4-time Grammy winner, and 24-time Dove award winner! This evening of worship and song is sponsored by Bard Manufacturing. The concert is free and open to the public. No tickets required. Bring your own lawn chairs and/or blankets for seating.

More information can be found here: <https://fb.me/e/2Rcwfdh6T>

Prayer Requests

Please let the church office know of any additional prayer requests. Call 419.782.5766 or email church.office@stjohntigers.com.

For the Prayer Chain, please contact Judy or Penny via phone, text, or email if you have a prayer request, an addition, a correction, or any feedback for the Prayer Chain Warriors to include in their prayers. Judy Detter (detterjudy@gmail.com), text Judy: 419.783.7032. Penny Mueller (pennym41@gmail.com) text Penny: 419.304.5768

Interest-Free College Loans for Undergraduate Lutheran Students



Students, attain the life you're called to live. The Pierstorf College Fund offers interest-free educational loans to Lutherans living in the state of Ohio. Students must be enrolled full-time in a four-year undergraduate program at any accredited college or university. Explore academic pursuits, discover your unique gifts, and grow in the Spirit with yearly loans of up to \$4,000. For more information and to apply, visit Pierstorf.org. Application deadline - June 30, 2023. Follow Pierstorf College Fund on Facebook and Instagram or check out our website for our most current information.

May Drive Thru Dinner Fundraiser Results

Our Tuesdays at 10 Bible Study group (studying Life 101) led us to do a fundraiser drive-thru dinner on May 2, 2023. The fundraiser was for St. Vincent's Home Way From Home, which provides housing for area residents whose loved ones are hospitalized at St. Vincent's. Our income included one Thrivent card. A report of our Election Day Drive-Thru is as follows:

Income	\$4,305.00
Expenses	\$1,737.50
Check to HAFH	\$2,567.50



A NOTE FROM THE CHURCH OFFICE COMMITTEE

As many know, Monica Gonzales resigned her church secretary position in April to pursue another opportunity. Cassandra Thompson remains as St. John's church secretary but has submitted her resignation to take a job at the Ark Encounter in northern Kentucky. Her last day will be June 23. We wish both the best in their new jobs.

Debbie Wagner will move to the church office as our new Church Ministries Coordinator. She will be having hip surgery on June 14. She will not be able to assume her position until late July. It is necessary to hire temporary staff. Mabel Adams, a sophomore at Defiance High School, will be joining the office staff. Mabel has been in the background on occasion, as she has helped out with previous secretaries. As of May 16, she has been in the church office after school, shadowing Cassandra. Beginning June 1, she will work full time in the office with Cassandra. The Elders Office Committee will meet with Mabel weekly to support and guide her. Please direct any questions to the church office committee.

Respectfully, Rick Baldwin & Mike Saxton



Bible Study Opportunities

Led by Pastor Mews

In Depth Bible Study

This class is currently working through The Prodigal God: Recovering the Heart of the Christian Faith by Timothy Keller. This book is an overview of the Parable of the Prodigal Son, and a continuation of the "Parables Through Peasant Eyes" class. This 2:00-3:00 p.m. class is held in the Fellowship Room on Wednesdays. Anyone is welcome to join!

Revelation Thursday A.M. Bible Study

Have you ever had questions over the Book of Revelation? This class discusses your questions about Revelation and gives hope in our victory in Christ. The class gathers from 10:00-11:30 a.m. every Thursday in the Fellowship Room. All is provided.

Life with God

Life with God 1 is happening over the summer. This class is for those seeking to join, wishing to explore the basics of Christianity, or learn "Lutheranism 101." Please contact the church office if you would like to be a part of this class Monday nights from 6:30-8:30pm in the Fellowship Room the next time it runs. Members are encouraged to attend every five years.

Summer Bible Study

This summer, get back to the foundations of faith by studying The Reason for God by Timothy Keller. This class will take place on Wednesdays at 6:30 pm beginning on June 7. It will cover topics such as "Christianity and science," "suffering," "injustice" and more! Sign up for this class in the church office by June 4. A \$5 donation is requested for your book.

Bible Studies

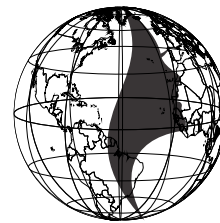
SUNDAY-9:30 a.m.

- Phil Rohlf – "Conversations with Jesus" Lunchroom A
- Faye Luhring—"Making it Through a Life Shift" Lunchroom B
- Jeff Rohlf – "The Foundations" By Ken Ham, Adult Room A
- Sandy Gyurnek –"You Were Made for this Moment" by Max Lucado, In the Fellowship Room
- Roger Schafer—Youth Bible Study, In the Fellowship Room

SECOND TUESDAY AND FOURTH TUESDAY



KNIT 'N STUDY—This group will meet on June 13 & 27 and July 11 & 25. This group makes crocheted or knitted baby/children's items for the Women's Health Center in Defiance.. This group makes crocheted or knitted baby/children's items for the Women's Health Center in Defiance.



MOMS IN TOUCH

Faye Luhring invites to you join a group of ladies who pray for not only our congregation and its members, but also our community and world affairs. They meet every other Monday at 9:00 a.m. at 274 Wilson St. This summer, they meet June 5 & 19 and July 3, 17, & 31.

HAPPY ANNIVERSARY

40+ years

JUNE

Philip & Jean Hoag, June 3 (56)
John & Wendy Nashu, June 3 (40)
Larry & Mary Mick, June 4 (41)
Jody & Lori Zeller, June 5 (51)
Mike & Nancy Kemper, June 5 (47)
Lonnie & Connie Warncke, June 7 (43)
Fred & Carol Schuette, June 11 (57)
Ted & Carol Pohlmann, June 14 (54)
Bill & Angie Lorenz, June 18 (40)
Rick & Nancy Baldwin, June 19 (47)
Dave & Pat Heidepriem, June 20 (52)
Richard & Nadine Buchhop, June 20 (54)
Franklin & Susan Borkosky, June 21 (54)
Gene & Candy Leal, June 22 (45)
Marvin & Marian, June 28 (54)
Larry & Pamela Breckler, June 30 (50)

JULY

Bruce & Dianne Hefflinger, July 10 (41)
Dave & Ruth Memmer, July 12 (54)
Charles & Virginia Payne, July 15 (51)
Jonas & Maggie Mack, July 19 (71)
David & Shirley Browns, July 19 (54)
John & Jean Jacques, July 20 (48)
William & Paula Johnson, July 21 (67)
Dennis & Becky Johnson, July 25 (53)



PASTOR'S SERMONS

IF YOU MISSED A SERMON, YOU CAN FIND IT ON OUR YOUTUBE CHANNEL, ON OUR WEBPAGE (WWW.STJOHNDEFIANCE.COM) AND ON OUR PODCAST SITE.

GOOGLE SEARCH: ST JOHN LUTHERAN CHURCH DEFIANCE OHIO YOUTUBE. THEN SUBSCRIBE TO ST. JOHN CHANNEL TO GET NOTIFIED WHEN WE ARE BROADCASTING "LIVE".

LINK TO OUR WEBPAGE

[HTTPS://WWW.STJOHNDEFIANCE.COM/SERMONS-2/](https://www.stjohndefiance.com/sermons-2/)
LINK TO OUR PODCAST

[HTTPS://WWW.BUZZSPROUT.COM/54964](https://www.buzzsprout.com/54964)

PUT YOUR FAVORITE PODCAST APP ON YOUR PHONE AND LISTEN TO THE SERMONS ANY TIME OF DAY.

RADIO

WONW 1280 AM DEFIANCE

WZOM 105.7 FM DEFIANCE

OUR SERVICE IS BROADCAST A WEEK LATER ON SUNDAY AT 9:30 A.M. ON WONO 1280 AM AND ON WZOM 105.7 FM AT 8:00 A.M.

DCTV

THE 11:00 A.M. SERVICE IS VIDEOTAPED EVERY WEEK AND EDITED AND SENT TO DCTV-DIGITAL CHANNEL 1021. IT IS BROADCAST A WEEK LATER.

Happy BIRTHDAY 80+ years

JUNE

Emily Wichman June 8 (86)
Ruth Benien June 9 (81)
Annette Kline June 10 (90)
Linda Hahn June 12 (83)
Maxine Pippin June 14 (88)
Bob Heyman June 15 (82)
Karen Buntain June 20 (81)
Marilyn Reeb June 22 (89)
Mary Grime June 23 (80)
Ted Nicely June 25 (87)
Maxine Thieroff June 27 (93)
Louise Marihugh June 28 (84)
Larry Graft June 29 (81)
Ann Kelley June 29 (97)
Howard Grime June 30 (85)
Bonnie Karzynow June 30 (84)

JULY

Marie Culler July 4 (85)
Kenneth Diemer July 12 (88)
John Goldenetz July 12 (81)
Don Van Vlerah July 13 (81)
Keith Eberle July 16 (85)
Jonas Mack July 19 (91)
Larry Wieland July 21 (80)
Suzanne Hultz July 23 (81)
Sue Goller July 28 (85)
Jean Meyer July 31 (92)





SCOUT NEWS

JUNE-JULY 2023



Summer provides a variety of fun and exciting activities for Cubs to enjoy. In June, members of the Pack and their families will be visiting either the Binder Zoo in Michigan or the Planetarium in Toledo. In addition, Cubs will enjoy loads of fun at the Rain Gutter Regatta and water games, an annual event, that will find them moving sailboats made from a kit down a water-filled rain gutter by blowing on the sails. Water games and a visit to the Bronson Park Splash Pad are also a part of the Regatta. ‘

Cubs will be busy in July with both day camp and overnight camping opportunities. With the theme of Camp Lakota: The Final Frontier, Cubs will go from the future to the past. In addition, a get together with activities at a local park and a join hike for new Cubs in August is on the agenda.

The Troop will be attending a week of summer camp at Lakota in July, as has been done for many years. Scouts will have an opportunity to complete a number of merit badges but also have time for a number of fun activities, including using the water slides, swimming, fishing, canoeing, kayaking and sail boating in Lake Glengary, sharpening their skills in shooting sports with rifles, shot guns and bow/arrows, making crafts, and practicing various scout skills to name a few. Leadership development is also an important aspect of summer camp.

Memorial Day weekend provided an opportunity for members of both the Pack and Troop to serve as flag bearers for the St. John Church services. Further, both units will participate in the city's Memorial Day observation at Riverside Cemetery. In addition, Scouts will be flagbearers for all July 4 services.

Youth and adults are always welcome to attend pack and troop events to learn more about the program. Questions at any time can be addressed to Mike Saxton, Chartered Organization Representative, at 419-439-2079.

OUTREACH MINISTRY



Outreach Ministry seeks to share the Gospel of Christ within and outside of our walls to proclaim Jesus and the ministry of our church and school locally, nationally and globally.

Bags with school and church information were passed out to visitors at the Lilac Festival held in downtown Defiance in May.

The Outreach Ministry team is seeking additional lay readers and ushers. Please consider this opportunity.

The Outreach Ministry Committee will have a presence in Kingsbury Park at Defiance Days in July. In addition to church and school promotional literature, free snow cones will be passed out.

St. John will be providing two meals and Christ Our Savior two meals for the combined VBS, scheduled at Christ Our Savior from July 23-26.

A tri-fold flyer showcasing our church and school is being developed and will be passed out at community gatherings.

A block party with an outdoor worship service is being planned in 2024. Food and other activities will be a part of the event as well.

The Outreach Ministry Committee meets monthly to plan additional opportunities to be more welcoming to worshippers and be more visible in the community.

Additional information regarding this ministry is available by contacting Mike Saxton at 419-393-2513 or Pastor Mews at 419-782-5766.

St John's Lutheran Church & R & R Tours presents:



**Ark Encounter DAYTRIP
Williamstown, Kentucky
September 19, 2023**



**Randy Nafziger, Tour Host & Bus Driver
Janet Koch, Carolyn Richard, Diana Grim – St. John Lutheran Contacts**

Tuesday, September 19

7:30 Leave St John's Lutheran Church, west parking lot

9:45 Rest Stop

**12:00 *Arrive at the Ark Encounter, eat at Ark restaurants:
Noah's Grill, Noah's Café, or Palm Plaza Café (Mexican)
or bring your own lunch and eat on the bus before we arrive**

4:00 Leave for Defiance

***Rest Stop and dinner at Culver's on 75**

9:00 Arrive Defiance

- **Cost: \$ 130 per person
\$ 125 Seniors (ages 60+)
\$ 109 Children (ages 11-17)**
*****40 NEEDED FOR TRIP TO GO AT THESE PRICES, ADDITIONAL COST IF LESS THAN 40.
MAXIMUM PASSENGERS - 56**
- **Prices include: Deluxe Excursion motor coach & entrance to the Ark Encounter
* Does not include meals**
- **Registration due by: August 5, 2023**

**For Questions or Reservations contact or call:
Janet Koch – 419.789.6675 Carolyn Richard – 419.766.0007
Diana Grim – 419.783.9581**

- **Please make checks payable to: R & R Tours**
- **Turn-in registration form & payment to: Janet, Carolyn, Diana or church office
For more information on the Ark go to arkencounter.com**

**Ark Encounter Daytrip
September 19, 2023**

**Name: _____ Phone Number: _____
Address: _____ Email address: _____
Number of Reservations: _____ Amount Enclosed: _____**



June 2023

SUNDAY	MONDAY	TUESDAY	WEDNESDAY	THURSDAY	FRIDAY	SATURDAY
				1 Clothes Closet 9a Food Pantry 9:30a Revelation 10a Elder Meeting 7p	2 Clothes Closet 10a	3 COMMUNION Worship 5:30p
4 COMMUNION Worship 8:00 & 9:30a Baptism 9:30a Sunday School 9:30a Bible Study 9:30a Worship 11:00a	5 Baringer Wachtman Scholarship 9a Moms in Touch 9a Finance 9:30a Bible Study with Lisa Mews 6:30p Life with God 1 6:30p TeleCare 6:30 p	6 Pastor at Circuit Pastor Meeting Food Pantry 9:30a Outreach 6:30p	7 Prodigal God 2p	8 Clothes Closet 9a Food Pantry 9:30a Revelation 10a BCDS Meeting	9 Pastor on Vacation Clothes Closet 10a	10 Pastor on Vacation Worship 5:30p
11 Pastor on Vacation Worship 8:00a & 9:30a Sunday School 9:30a Bible Study 9:30a Worship 11:00a	12 Pastor on Vacation Finance 5:30p	13 Pastor on Vacation Food Pantry 9:30a Knit 'N Study 1p	14 Pastor on Vacation Endowment 11:30 a	15 Pastor on Vacation EPISTLE ARTICLES DUE Clothes Closet 9a Food Pantry 9:30a Parish Planning 7p	16 Clothes Closet 10a	17 COMMUNION Worship 5:30p
18 COMMUNION Worship 8:00 & 9:30a Sunday School 9:30a Bible Study 9:30a Worship 11:00a Worship at Laurels 3p Installation of Pastor Holman 4p	19 Moms in Touch 9a Finance 9:30a Bible Study with Lisa Mews 6:30p Life with God 1 6:30p	20 Food Pantry 9:30a Trustees 6:30p	21 Prodigal God 2p Summer Bible Study 6:30p	22 Clothes Closet 9a Food Pantry 9:30a Revelation 10a	23 Clothes Closet 10a	24 Worship 5:30p
25 Worship 8:00 & 9:30a Sunday School 9:30a Bible Study 9:30a Worship 11:00a	26 Finance 5:30p Bible Study with Lisa Mews 6:30p Life with God 1 6:30p	27 Food Pantry 9:30a Knit 'N Study 1p	28 Prodigal God 2p Summer Bible Study 6:30p	29 Clothes Closet 9a Food Pantry 9:30a Revelation 10a	30 Clothes Closet 10a	



July 2023

SUNDAY	MONDAY	TUESDAY	WEDNESDAY	THURSDAY	FRIDAY	SATURDAY
						1 COMMUNION Worship 5:30p
2 COMMUNION Worship 8:00 & 9:30a Bible Study 9:30a Worship 11:00a	3 Moms in Touch 9a Finance 9:30a Bible Study with Lisa Mews 6:30p TeleCare 6:30p	4 CHURCH OFFICE CLOSED INDEPENDENCE DAY Youth Board Meeting 6:30p	5 Prodigal God 2p Summer Bible Study 6:30p	6 Clothes Closet 9a Food Pantry 9:30a Revelation 10a Elder Meeting 7p	7 Clothes Closet 10a	8 Worship 5:30p
9 Worship 8:00a & 9:30a Bible Study 9:30a Worship 11:00a	10 Finance 5:30p Life with God 6:30p Bible Study with Lisa Mews 6:30p Life with God 6:30p	11 Food Pantry 9:30a Knit & Study 1p Outreach 6:30p	12 Endowment 11:30a Prodigal God 2p Summer Bible Study 6:30p	13 Clothes Closet 9a Food Pantry 9:30a Revelation 10a School Board 7p	14 Clothes Closet 10a	15 COMMUNION Worship 5:30p
16 COMMUNION Worship 8:00 & 9:30a Bible Study 9:30a Worship 11:00a Worship at Laurels 3p	17 Moms in Touch 9a Finance 9:30a Bible Study with Lisa Mews 6:30p Life with God 6:30p	18 Food Pantry 9:30a Trustees 6:30p	19 Prodigal God 2p Summer Bible Study 6:30p	20 Clothes Closet 9a Food Pantry 9:30a Revelation 10a Parish Planning 7:00p	21 Clothes Closet 10a	22 Worship 5:30p
23 Worship 8:00 & 9:30a Bible Study 9:30a Worship 11:00a VBS Christ Our Savior 5:30p	24 Finance 5:30p VBS Christ Our Savior 5:30p Bible Study with Lisa Mews 6:30p	25 Food Pantry 9:30a Knit & Study 1p VBS Christ Our Savior 5:30p	26 Prodigal God 2p VBS Christ Our Savior 5:30p	27 Clothes Closet 9a Food Pantry 9:30a Revelation 10a	28 Clothes Closet 10a	29 COMMUNION Worship 5:30p Pastor Mews at LCMS National Convention
30 COMMUNION Worship 8:00 & 9:30a Bible Study 9:30a Worship 11:00a Pastor Mews at LCMS National Convention	31 Pastor Mews at LCMS National Convention					